

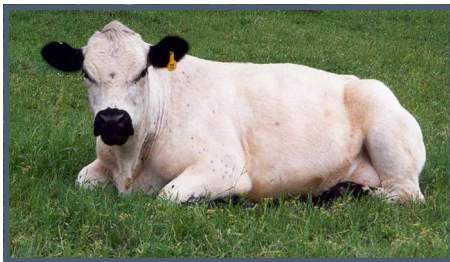


Non Profit Articles of Incorporation filed with Secretary of State of Iowa in 1987.

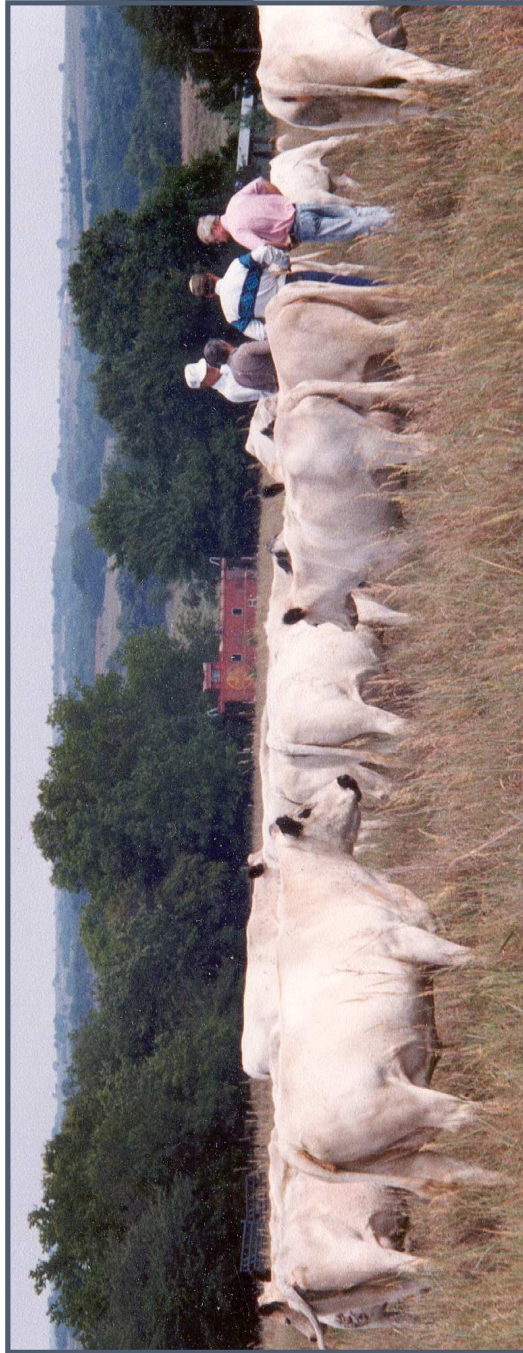
Purpose - The improvement and promotion of the British White Cattle Breed in America and the education of the general public as to the merits of the breed.

Some Important Traits

- Naturally Polled
- Gentle Disposition
- Fertility & Ease in Calving
- Efficient & Trouble Free
- Superior Maternal Instinct
- Excellent Milking Ability
- Growth & Hardiness
- Excellent flavor and tenderness



Standard Marked British White Cow. A good exhibit of the preferred and most common colors among British Whites.



BWCAA Board Members touring a British White herd. Note how gentle & without stress the cattle are. And this is with a group of strangers walking through them. This is a natural trait of the breed.



Standard Marked British White Pair. A 13 year old British White Cow with her coming two year old heifer. An exhibit of longevity and consistency.

British Whites are a Rare Old English breed maintained with and selected for those beef cattle traits so needed in today's cattle industry.

- Naturally Polled
- Gentle Disposition - Highly Fertile
- Excellent Flavor & Tenderness
- Hardiness - Superior Grading
- Easy Keeping - Excellent Milk
- Easy Calving - Good Growth
- Superior Maternal Instincts
- High Dressing Percentage

Call Now
For a Breeder Near You
1-800-826-4038

British White Cattle

Docile. British Whites are possibly the most gentle cattle of any beef breed. This trait alone makes them your ideal choice whether you raise cattle as a hobby or on a commercial basis. Research has proven that gentle cattle do better on feed and hang a better carcass.



A good growthy, well marked heifer. Age 56 days.

Fertility, Easy Calving & Excellent Milking Ability. The single most economic trait in the Beef Cattle Industry is the ability of a cow to give birth to her first calf at two years of age and then give enough milk to raise it on her own. Her second and each subsequent calf should arrive within 12 month intervals.



Moving to another pasture, note their gentle nature & willingness to follow.

Efficient & Trouble Free. British White Cattle are known for their “Easy Keeping” and it is not at all unusual for a fifteen year old cow to have an udder that resembles that of a young four year old. Their black ears, eyes, muzzle, teats and hooves reduces or eliminates the problems associated with pinkeye, cancer eye, sun burned udder or feet.

Growth & Hardiness. British White Cattle have developed an ability that enables them to forage and graze in all kinds of adverse weather conditions. They thrive in either extreme heat or cold.

Tender, High Grading and High Dressing Percentage. British White Beef is right for the times. The meat is very tender and tasty. A thin rind of back fat with a light flecking of marbling that sets off the obvious quality of a good steak or roast. It

is not uncommon for 90% of an entire pen to grade choice or better.

The British White Cattle Association of America

Working since 1987 towards improving and promoting the British White Cattle Breed in America and the education of the general public as to the merits of the breed.

Call **1-800-826-4038** today and ask for a membership application.

British White Cattle Association of America, LTD.
PO Box 281 Bells, TX 75414-0281

Local Telephone: 903-965-7718
Toll Free: 800-826-4038
Fax: 903-965-5452

Email: office@britishwhite.org
Web Page: www.BritishWhite.org
